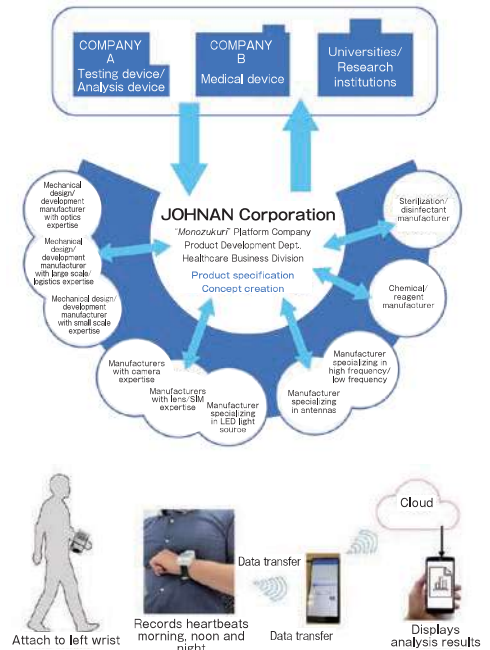


Your Best Partner To Accelerate Your Business

We offer support to customers aiming to commercialize medical devices, from research & development to mass manufacturing and all other aspects of production, contributing to the facilitation of the practical implementation of the products.

Development Cases

Development of a remote diagnosis system using the five senses, which contributes to reducing heart failure re-hospitalization for at-home chronic heart failure patients (current AMED project).
Development support for practical implementation of medical devices invented by Assistant Professor Masuda (Japan Biodesign, Osaka University), Medical Center for Translational Research, Osaka University Hospital.
Our company actively supports the development and mass manufacturing of innovative medical devices for customers, aiming at practical implementation by doctors and other entrepreneurial businesses, start-ups, medical device manufacturers, and others.



Images of a product currently supported for development

For inquiries or business meetings

- Hospitals, clinics
- Distributors
- Medical device development companies
- Medical device manufacturers
- Companies, researchers, and physicians requiring development support



Contact Person : Daisuke Nakata
Email : daisuke.nakata@johnan.com

Top 5 strengths of our company

- 1 Provides a one-stop solution from R&D to mass production
- 2 Supports the preparation of development documents and approval application documents
- 3 Comprehensive support for commercialization through collaboration with domestic and overseas partners
- 4 Approximately 100 consultations on medical device development and manufacturing per year
- 5 Cumulative shipments of several thousand units of cleaning and disinfection related equipment

Why we are chosen

- 1 We build a mutually beneficial relationship with our customers and develop products together as one team
- 2 The customer's goal is our goal
- 3 We focus on speed and quality

Why we are trusted

- 1 Product R&D and proposal capabilities for innovative medical devices
- 2 Well-established medical device development steps and expertise
- 3 Cooperative partnerships with domestic and international companies and organizations, and proactive activities to establish a medical device ecosystem

Company Information



Company Name : JOHNNAN Corporation
Address : #102, 3-9-19 Fujihashi, Ome-shi,
Tokyo 198-0022, Japan
TEL : +81-428-84-2252
FAX : +81-428-84-2253



<https://www.johnan.com/en>